

MONTHLY MEMBERSHIP PROGRESS REPORT

District 31 N

Results as of: 2/29/2024

GMT:

LOCATION NORTH CAROLINA

GMT CA

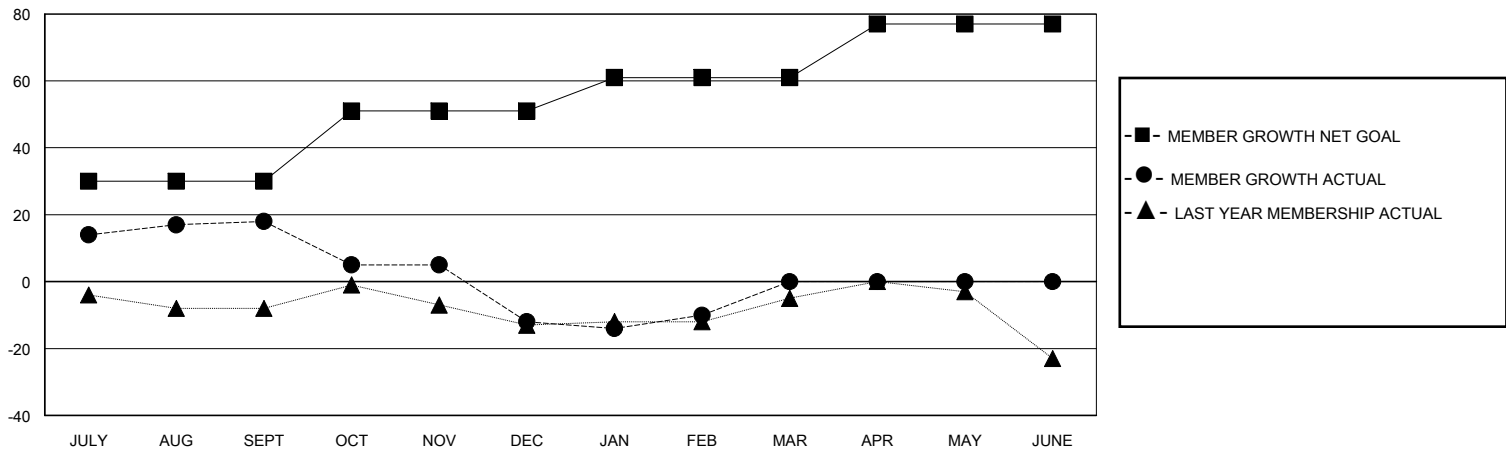
Clubs			
RESULTS FOR 2023-2024			
QUARTER	NEW CLUB GOAL	NEW CLUBS	DROPPED CLUBS
JULY/AUG/SEPT	0	0	0
OCT/NOV/DEC	0	0	1
JAN/FEB/MAR	0	0	0
APR/MAY/JUNE	1	0	0

Members			
RESULTS FOR 2023-2024			
QUARTER	MEMBER GROWTH NET GOAL	MEMBER GROWTH ACTUAL	DROPPED MEMBERS ACTUAL (including transfers)
JULY/AUG/SEPT	30	50	24
OCT/NOV/DEC	21	32	53
JAN/FEB/MAR	10	24	14
APR/MAY/JUNE	16	0	0

GOALS AND ACTUAL NEW CLUBS CUMULATIVE



GOALS AND ACTUAL MEMBERS CUMULATIVE



DROPPED CLUBS: 1

22 CLUBS OF 53 ADDED 1 OR MORE NEW MEMBERS

GENDER DISTRIBUTION

MALE 636 (65.10%)
FEMALE 341 (34.90%)

DROPPED MEMBERS

DECEASED	9
CLUB CANCELLED	7
OTHER	75
TOTAL	91

[CLICK HERE FOR CUMULATIVE MEMBERSHIP DATA](#)

TOTAL FAMILY UNIT MEMBERS	224
FAMILY MEMBERS PAYING HALF DUES	115